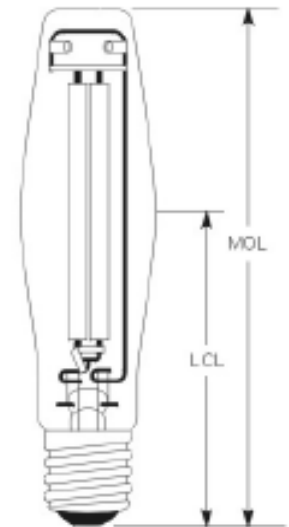


Utility Products

Howard Lighting



- Cobra Heads (Drop and flat glass)
- Floods (Compact, Medium, Large)
- Nema Heads (Package “A”, “B”, and “C”)
- HPS Standby lamps (dual arc tube)
- Mercury Vapor (increased lamp life 24,000 hrs.)





Small Cobra Head

USC Series – Roadway Lighting

35-250w HPS / 70 - 250w Metal Halide Pulse Start

Howard Lighting's new USC Series provides excellent roadway lighting for local roads, residential streets, parking areas, rural roads and intersections.

Features:

- Meets ANSI requirements (ANSI C136.2, 136.3, 136.10, 136.14, 136.15 and 136.17).
- Die-cast aluminum housing with integral slipfitter.
- Available with IP-66 rating
- Lens replacement without tools
- Available in IESNA Type II and III light distribution patterns and full cutoff.
- Available with acrylic, polycarbonate or glass refractors.



Small Compact Flood

UCF Series – Compact Floodlight

35-400w HPS / 70 - 400w Metal Halide Pulse Start

Howard Lighting's new UCF Series provides excellent area lighting for commercial retail areas, parking, recreation areas, industrial security, building façade, or signage.

Features:

- Meets ANSI requirements (ANSI C136.2, 136.3, 136.10, 136.15 and 136.32).
- Die-cast aluminum housing with multiple mounting options.
- IP66 rating is standard
- Available in IESNA Type 7x6 and distribution patterns.
- Available with glare and vandal shields.
- Swivel Tennon, Wrap Yoke, Small Yoke



NEMA Head

UNH Series – Security Lighting

35-150w HPS / 50-150w Metal Halide Pulse Start

Howard Lighting's new UNH Series provides excellent security lighting for residential areas, storage facilities, loading areas, or rural roadways.

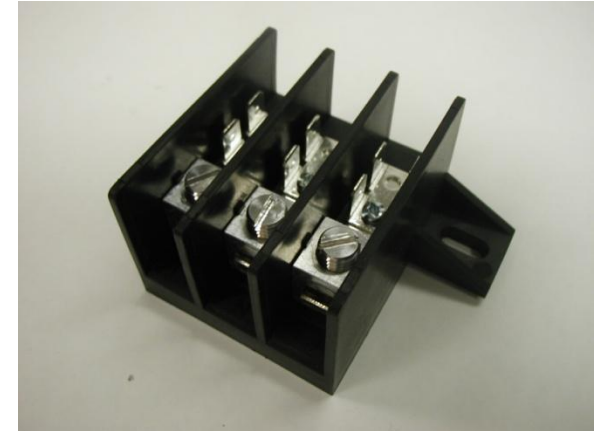
Features:

- Meets ANSI requirements (ANSI C136.2, 136.6, 136.9, and 136.10).
- Die-cast aluminum housing with integral slip fitter.
- Optics attach to head without tools.
- Available in package with arm, bolt kit, optics, photo control and lamp.
- Available in IESNA Type II, III, and V light distribution patterns.
- Full cutoff version available now

Utility Lighting Products from Howard Lighting



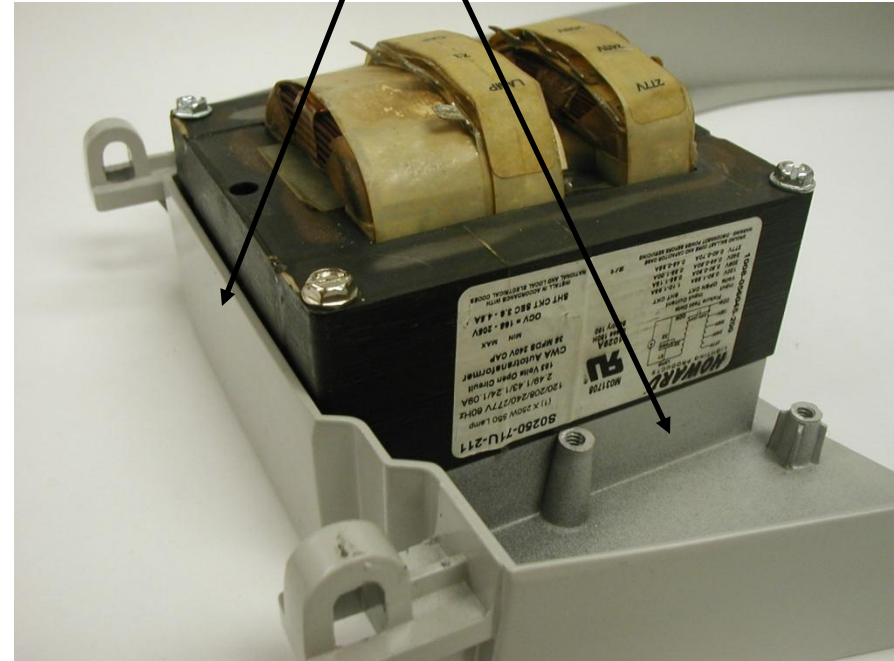
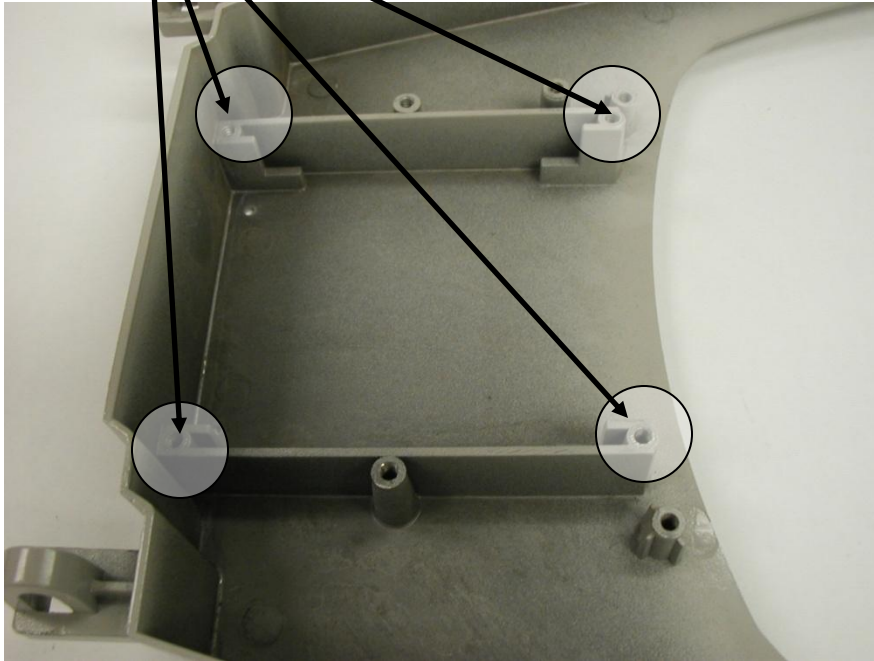
The USC Cobrahead is assembled with a ballast, terminal blocks, and starter receptacle that meet both standards and the expectations of Linemen.



Ballast is securely mounted with 4 screws

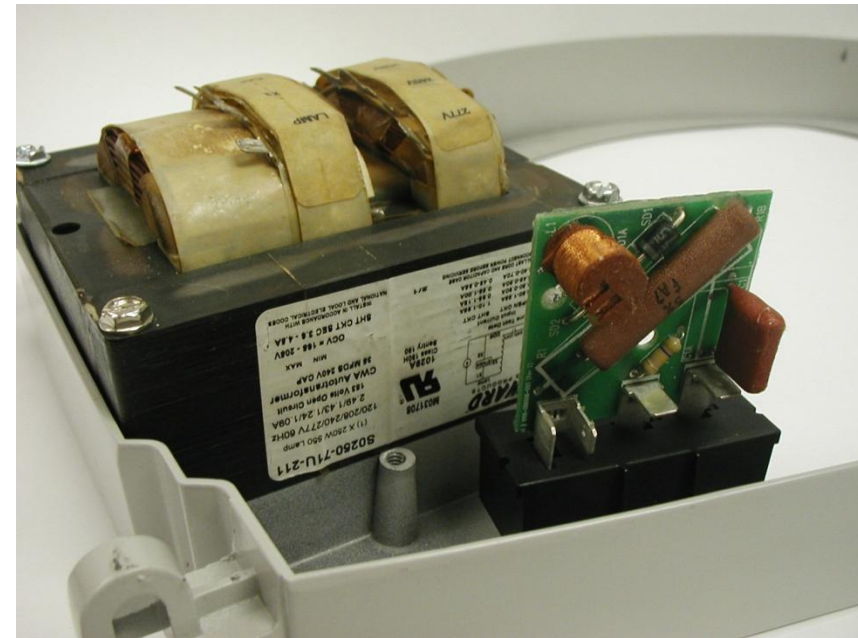
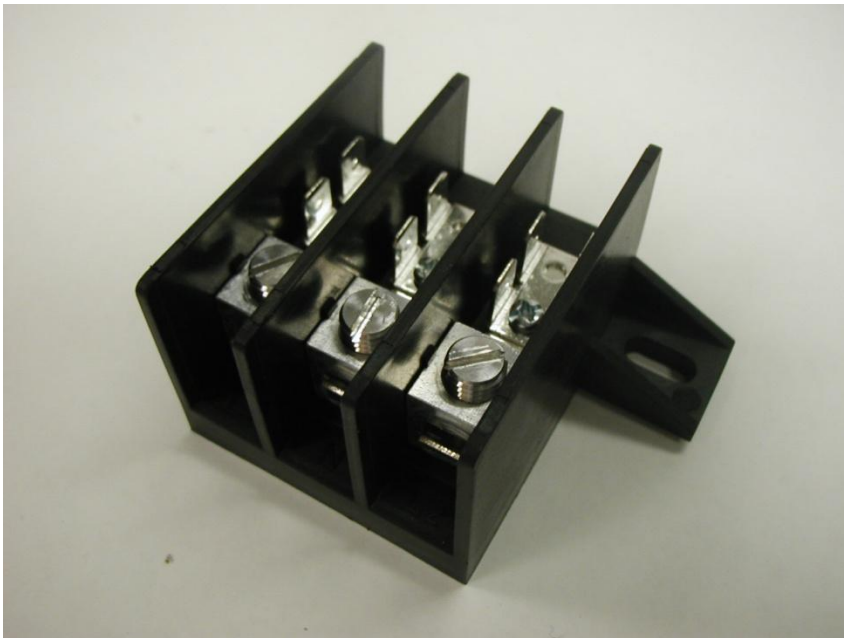
Ballast Mounted on the door, with integral heat sink unique to Howard. We are experts at making a ballast perform both electrically and thermally

Heat Sink

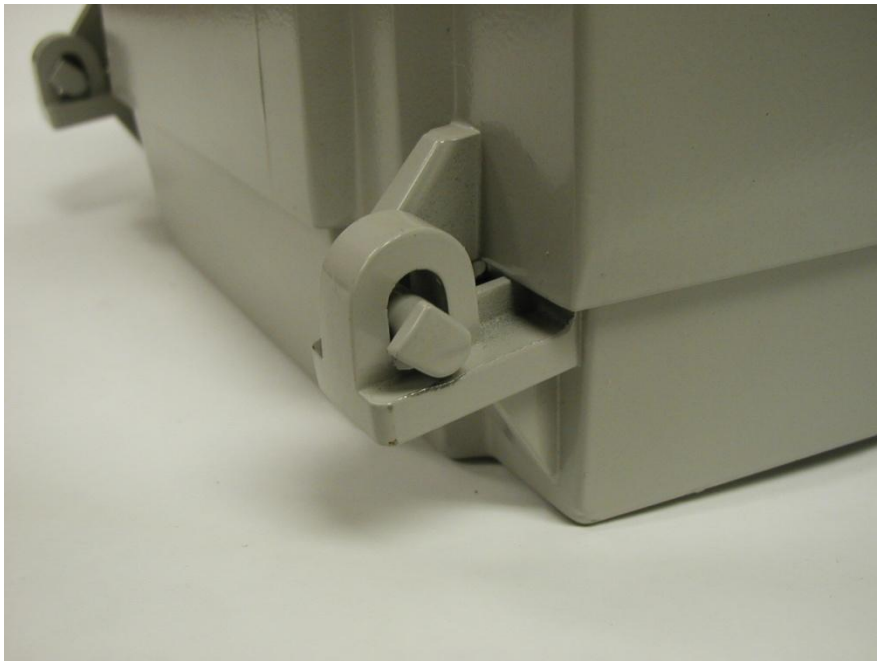


130°C plastic terminal block with captive extruded aluminum contact blocks. The terminals are Nickel Plated. Very robust design.

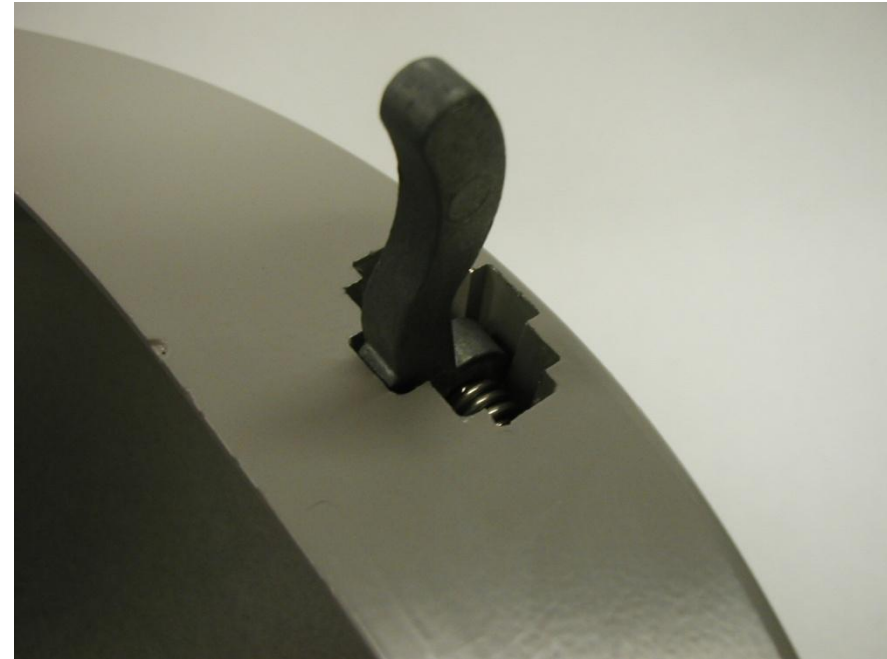
Plug in starter assembly. Contacts offset slightly to ease installation. The electronics face away from the ballast heat.



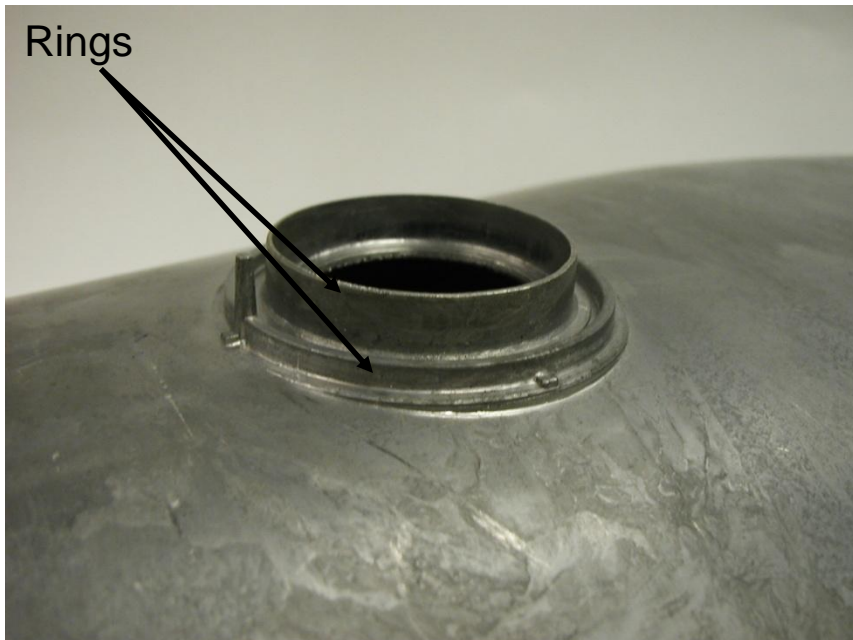
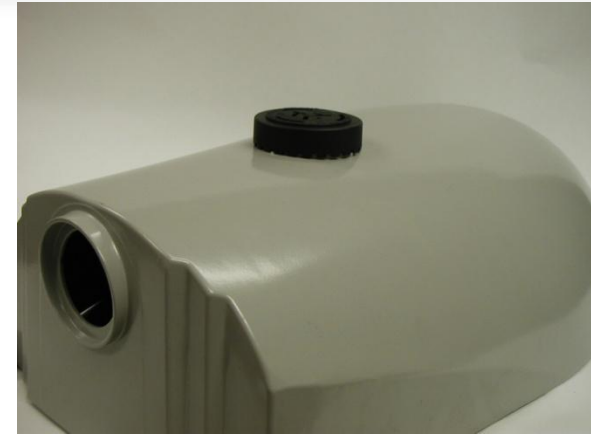
Hinge assembly between upper housing and lower housing is keyed at 135° so the door will not come off until you open it to the keyed position.



Trigger latch assembly for tool less entry into the fixture. Very robust stainless torsion spring made with precision CNC wire forming equipment



PEC – TOOL LESS adjustable and leak proof. Patented double concentric rings in the Photo Electric Control Receptacle mounting area keep water out. This assembly does not leak and does not need a gasket. The outer ring stops most water entry, the inner ring stops capillary effect and makes the assembly leak proof



Compact Size – Very small for 400W

Properly designed to handle the
Thermals

Balanced for easy mounting and
handling

Rugged Design

Mounting options

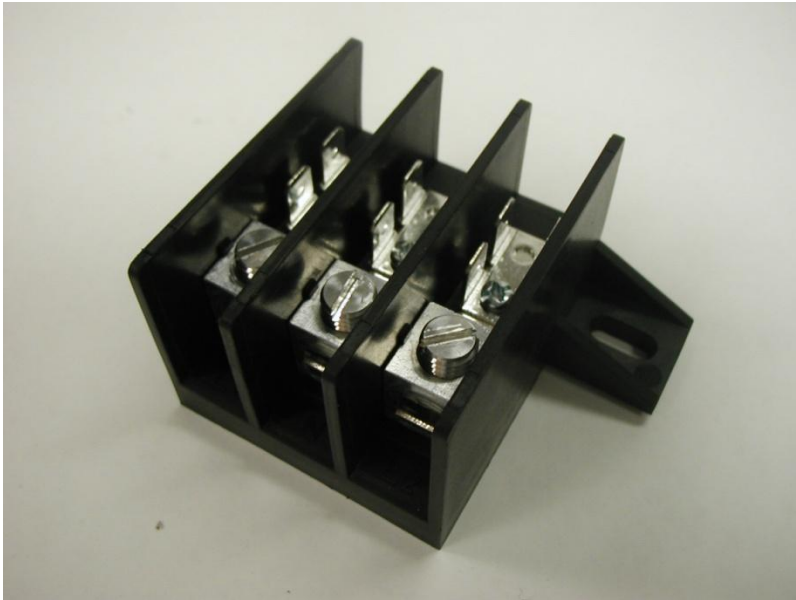
Bronze or Grey powder coat paint

Miro IV 94% reflective specular reflector
(optional)

Hammertone reflector (standard)



High Quality Terminal Block is common to all Howard Utility Products



Utility Tabbed Ballasts – no wire nuts

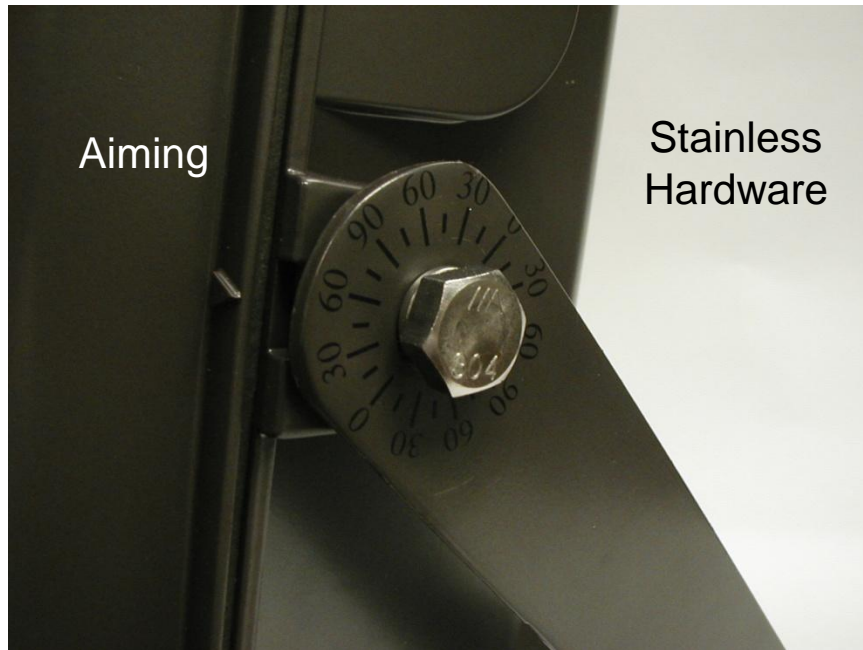


Encapsulated Starter



Standard Starter

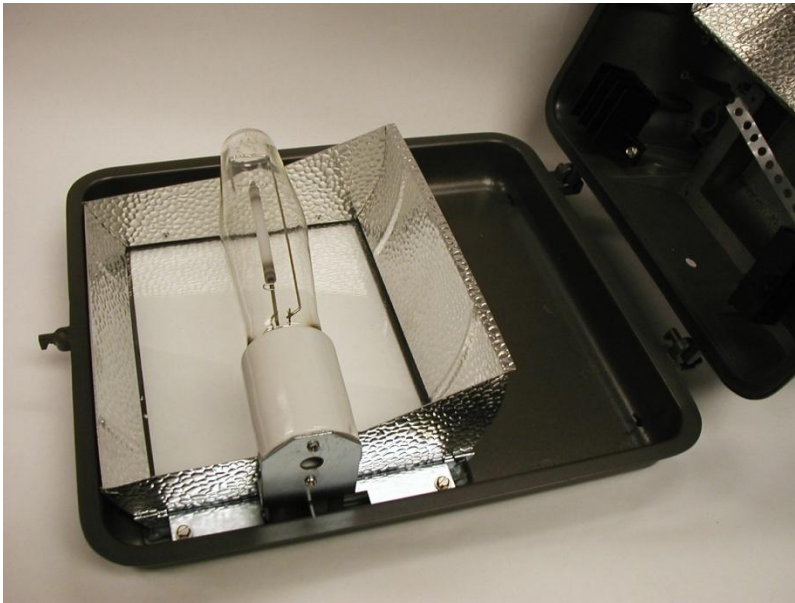
Large Yoke mounting option



Aluminum Cam Latch for
Tool Less Entry



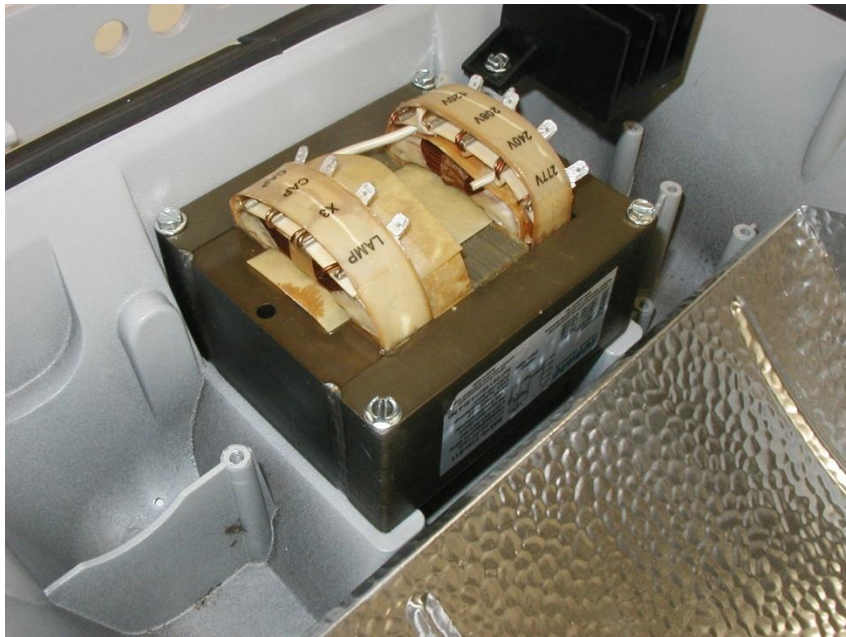
EASY access to the Lamp
mounted in the door Unique
to Howard



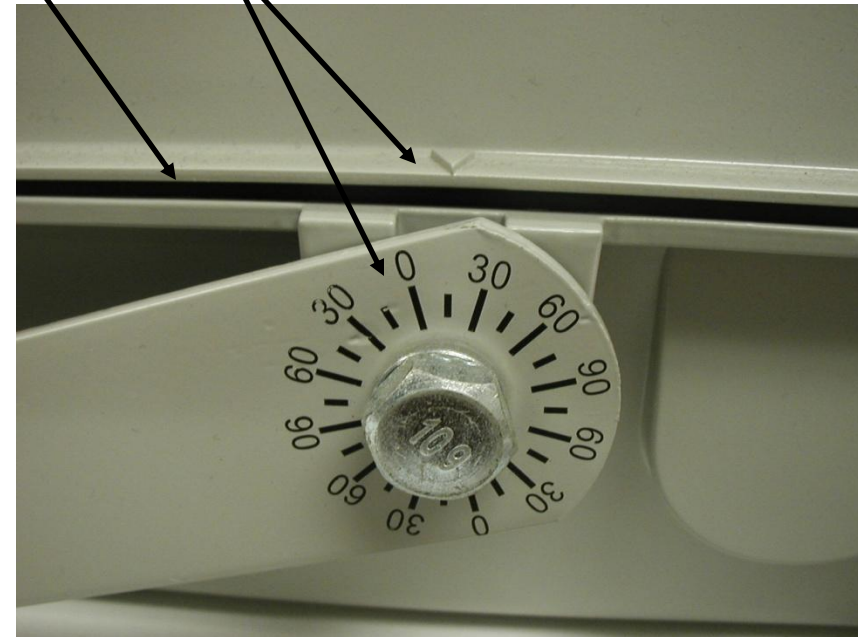
Ballast mounted in the center of the
fixture for Balance with 4 screws
and two planes of Heat sink.
HUGE advantages in thermal
performance



Tabbed Ballast mounted to Heat sinks

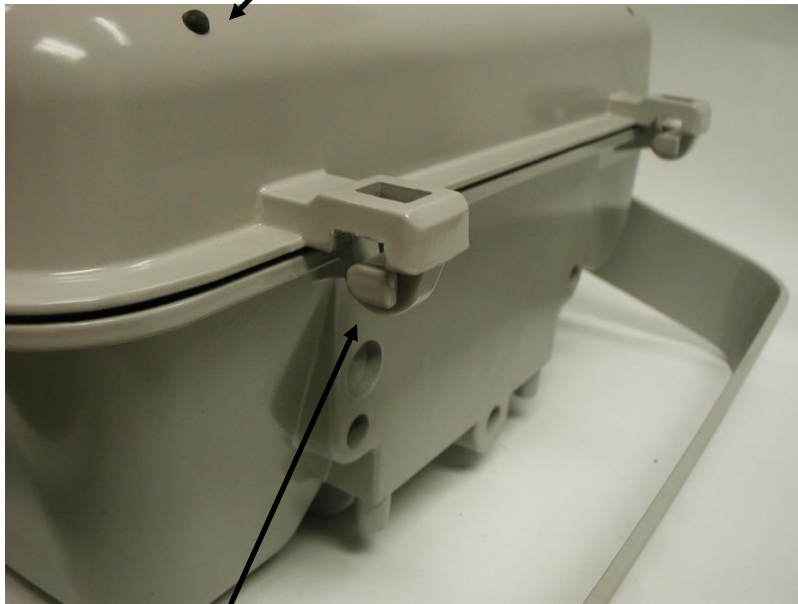


High Temperature Silicone Gasket



Aiming Features Built in.
Easy to see arrow and
Protractor

Plugged Weep Holes 2 on front and 2 on back



Keyed Hinges allow door to be removed at 90°



Patented Leak Proof Tool
Less Adjustable PEC
mounting